

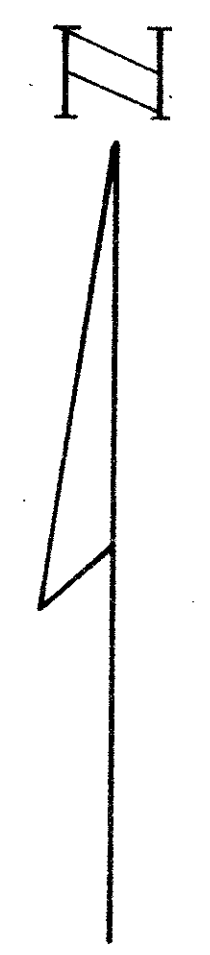
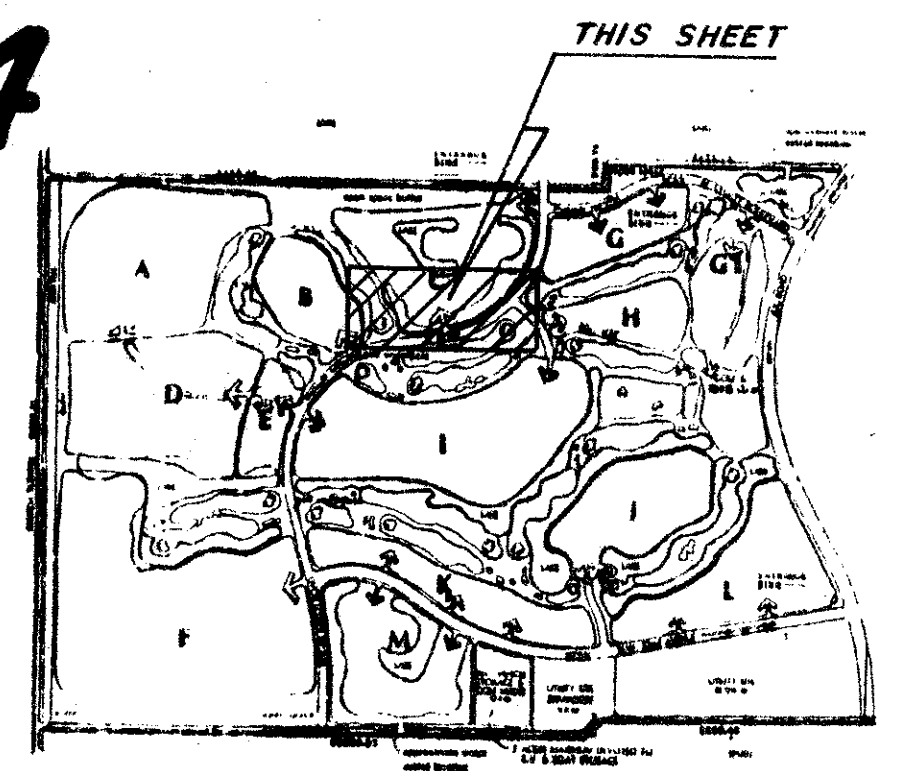
DRAWING NUMBER
55/39

ABERDEEN - PLAT NO. 4

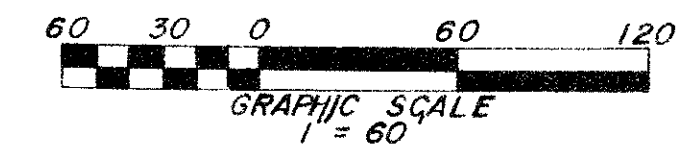
A PORTION OF A (P.U.D.)

SECTION 16, TOWNSHIP 45 SOUTH, RANGE 42 EAST
BEING A REPLAT OF A PORTION OF ABERDEEN - PLAT NO. 2 RECORDED IN
PLAT BOOK 55, PAGES 11 THRU 22, PUBLIC RECORDS OF PALM BEACH
COUNTY FLORIDA

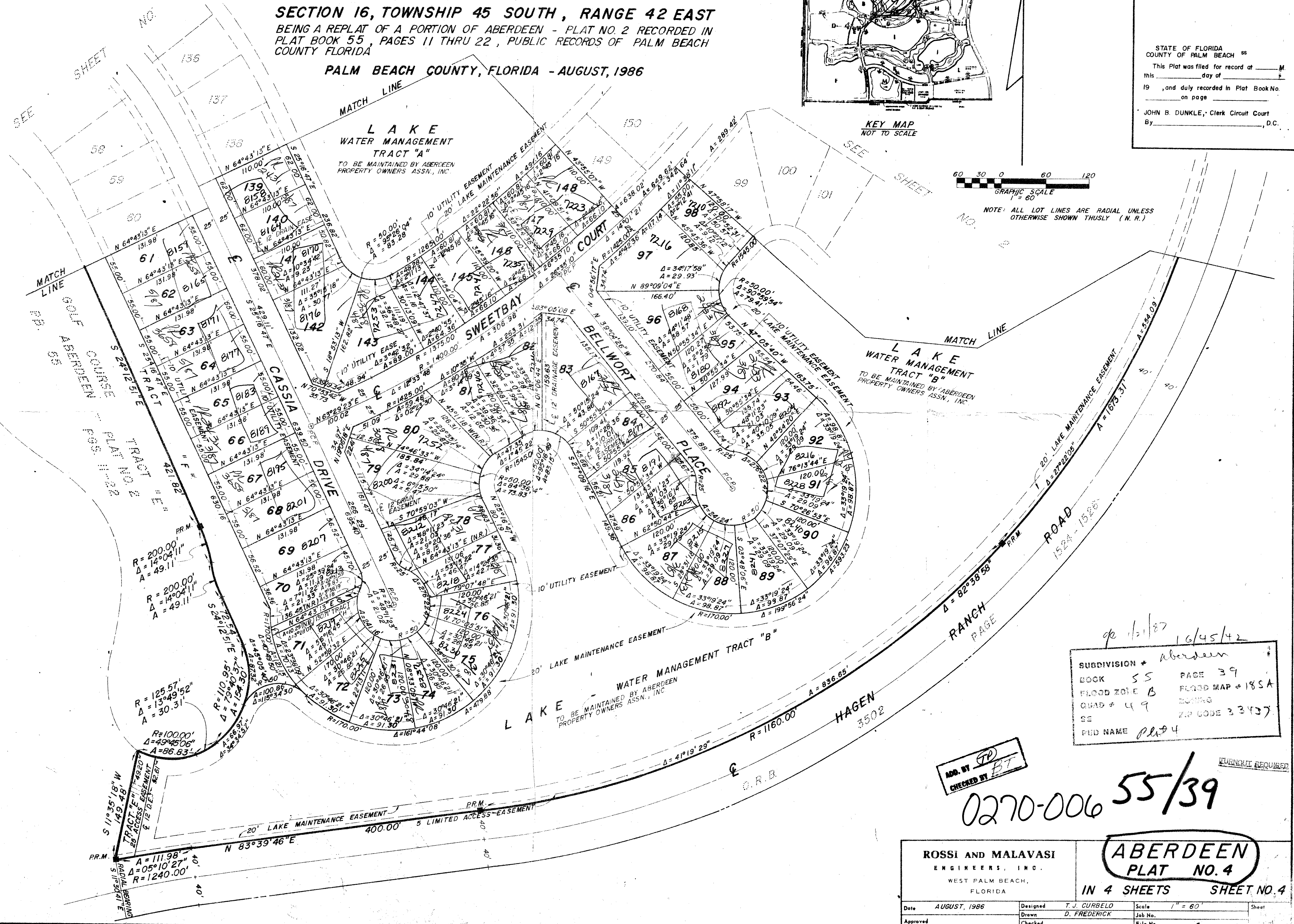
PALM BEACH COUNTY, FLORIDA - AUGUST, 1986



STATE OF FLORIDA
COUNTY OF PALM BEACH
This Plat was filed for record at _____ M.
this _____ day of _____ 19____
and duly recorded in Plat Book No. _____
on page _____
JOHN B. DUNKLE, Clerk Circuit Court
By _____, D.C.



NOTE: ALL LOT LINES ARE RADIAL UNLESS OTHERWISE SHOWN THUSLY (N.R.)



Subdivision * *Aberdeen*
BOOK *55* PAGE *39*
FLOOD ZONE *B* FLOOD MAP # *185A*
QUAD # *49* ZONE CODE *33437*
SE
PUD NAME *Plat 4*

ADD. BY *TP*
CHECKED BY *BT*

0270-006 **55/39**

ROSSI AND MALAVASI
ENGINEERS, INC.
WEST PALM BEACH,
FLORIDA

**ABERDEEN
PLAT NO. 4**

IN 4 SHEETS SHEET NO. 4

Date	AUGUST, 1986	Designed	T. J. CURBELO	Scale	1" = 60'	Sheet	
Approved		Drawn	D. FREDERICK	Job No.			
		Checked		File No.			

DRAWING NUMBER

DRAWING NUMBER

DRAWING NUMBER

PLAN HOLD CORPORATION - IRVINE, CALIFORNIA
RECORD BY NUMBER 07354